

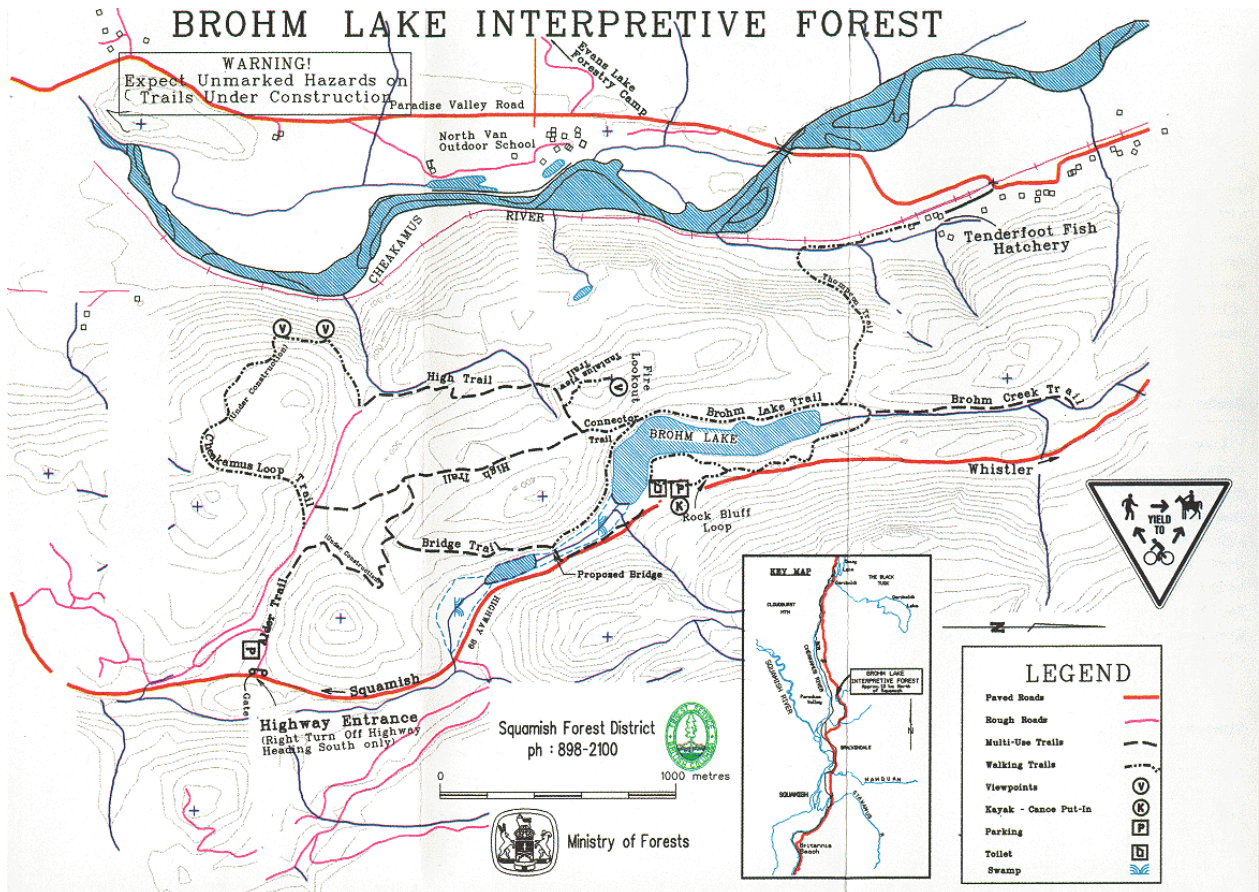
# Ministry of Tourism, Sport and the Arts Recreation Sites

## Brohm Lake Recreation Site

No invasive plants were found in the Brohm Lake Recreation sites during the February survey. The whole trail network was inventoried and only a small area of common burdock was found on a trail under the power line (north end of the park).

The inventory of invasive plant species was undertaken in early January to early March 2010, so limited to winter-identifiable species only. Other invasive species may be present.

IAPP site #	Jurisdiction	Area	Species	Distribution	Density	Comments
264608	Ministry of Forests & Range	0.01	Common burdock	Few sporadically occurring individuals	Low	On Powerline Trail



### Cat Lake Recreation Site

Only a patch of *Lamium* (*Lamium galeobdolon*) was observed growing at the Cat Lake parking lot. Inventory of all the campsites in the park and the trail network around the lake found no invasive species during the survey in February.

IAPP site #	Jurisdiction	Area	Species	Distribution	Density	Comments
264597	Ministry of Forests & Range	0.0025	Yellow archangel	Single patch	High	

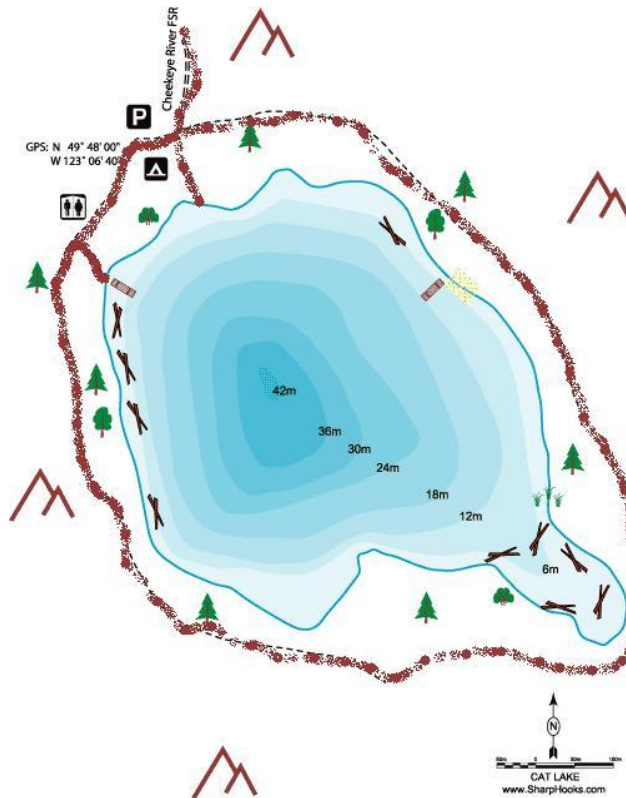


Fig 2: Route (brown) taken by field crew

(No photos)